

TECHNICAL DATA

OPERATING WEIGHT WITHOUT ATTACHMENTS

MHL370 F	109,789–114,639 lbs
----------	---------------------

DIESEL ENGINE

Manufacturer and model	Deutz TCD 7.8 L6
Design	6-cylinder inline
Control	EMR IV
Method of operation	4-cycle diesel, common rail direct injection, turbo-charged with intercooler, controlled exhaust gas recirculation, diesel particulate filter with continuous regeneration and SCR catalytic converter
Engine power	308 hp (230 kW)
Rated speed	2,000 rpm
Displacement	476 cui
Cooling system	Water and charge air cooling with temperature controlled fan speed
Exhaust emission standard	EPA Tier 4 final /EU stage IV
Fuel tank	153 gal Diesel
DEF / Urea tank	13.2 gal AdBlue

ELECTRICAL SYSTEM

Generator	28V/100A
Operating voltage	24V
Battery	2 × 12V/110Ah/750A
Lighting set	2 × LED headlamps, turn indicators and tail lights
Optional equipment	20 kW or 30 kW DC generator with controls and insulation monitoring

TRAVEL DRIVE

Hydrostatic travel drive via infinitely variable axial piston motor with directly mounted travel brake valve, two-speed manual gearshift, 4-wheel drive

Travel speed 1st gear	max. 3.1 mph
Travel speed 2nd gear	max. 9.3 mph
Gradeability	max. 30%
Turning radius	26'2"

SWING DRIVE

Slew ring	Internally geared, double-row ball turning ring
Drive	2-stage planetary gear with integrated multi-disc brake
Uppercarriage swing speed	Infinitely variable from 0–6 rpm
Rotating interlock	Electrically operated

UNDERCARRIAGE

Front axle	Planetary drive axle with integrated drum brake, rigidly mounted, max. steering angle 34°
Rear axle	Oscillating planetary drive rear axle with integrated drum brake and selectable oscillating axle lock
Stabilization	4-point stabilizers
Tires	Solid rubber 18.50" × 59" (SETCO)

BRAKE SYSTEM

Service brake	Hydraulic single-circuit braking system acting on all four wheel pairs
Parking brake	Electrically operated disc brake on travel gearbox, acting on both front and rear axles

HYDRAULIC SYSTEM

Pump delivery rate	2 × 74.0 gpm & 1 × 37.0 gpm (for swing operation)
Operating pressure	4641 / 5221 psi
Hydraulic oil tank	141 gal

CAB

Cab	Infinitely variable hydraulically elevatable with max. eye level of 20'8" (option: independent forward movement of up to 7'3"). Sound-deadened, ample thermal panoramic glass windows, windshield with pull-down sunblind, viewing window on cab roof, sliding window in cab door, sliding door
Climate control	Automatic air-conditioning. Infinitely variable heating with 8-speed fan, 10 adjustable air nozzles, including 4 in the roof lining, 3 defroster nozzles
Operator's seat	Air-cushioned comfort-seat with integrated headrest, safety belt and lumbar support, seat heating with integrated A/C function optional. Comfortable operation with multi-purpose adjustment options for seat position, seat inclination, seat cushion placement in relation to armrests and pilot control units. Articulating armrests and joysticks
Monitoring	Ergonomic layout, anti-glare instrumentation. Multifunction display, automatic monitoring and recording of abnormal operating conditions (including all hydraulic oil filters, hydraulic oil temperature (cold/hot), coolant temperature and charge air temperature, diesel particulate filter load, visual and audible warning indication with shutdown of pilot controls/engine power reduction. Diagnosis of individual sensors possible via the multifunction display. Rear view camera and side view camera
Sound levels	Sound power level (ambience) L _{WA} 102.9 dB(A) (metered) acc. to directive 2000/14/EG L _{WA} 104 dB(A) (guaranteed) acc. to directive 2000/14/EG Sound pressure level (inside the cabin) acc. to directive ISO 6396 L _{PA} 72 dB(A)

Certified in accordance with CE regulations

EQUIPMENT

DIESEL ENGINE

	Standard	Option
Intercooler and coolant radiator	●	
Direct electronic fuel injection/common rail	●	
Advanced automatic idle incl. engine shut-off function	●	
Engine preheating		●
Engine diagnostics interface	●	
Temperature-dependent fan drive	●	

UNDERCARRIAGE

All-wheel drive with differential	●	
Drum brakes	●	
Rear axle oscillating lock	●	
2-speed powershift transmission	●	
4-point stabilizers	●	
Stabilizer cylinders with integrated two-way check valves	●	
Piston rod protection on stabilizer cylinders	●	
Tool box	●	
Special paint (customer paint work)		●
Solid rubber tires 18.5" x 59"	●	

UPPERCARRIAGE

Separate cooling systems (combi-cooler for engine and hydraulic oil cooler)	●	
Cooling system with temperature-dependent fan drive	●	
Fan drive reversing function		●
Automatic central lubrication system	●	
Rear view camera	●	
Side view camera	●	
Travel alarm		●
Electric refuelling pump		●
Lighting protection		●
Special paint (customer paint work)		●

CAB

	Standard	Option
Hydraulically adjustable cab	●	
Cab system vertically and horizontally adjustable		●
3-layer glass with protection film	●	
Sliding window in cab door	●	
Reinforced glass (windscreen and roof panel)		●
Washer system (windshield)	●	
Roof washer system (skylight)		●
Air cushioned operator's seat with head-rest, safety belt and lumbar-support	●	
Seat heating with integrated A/C function		●
Joystick steering	●	
Steering column, height and tilt adjustable (instead of joystick steering)		●
Automatic air conditioning system	●	
Independent heating system		●
Multi-function touch display		●
FOPS protective guard		●
Front / roof protective guard		●
Radio USB & Bluetooth (EU & USA)	●	
12 V socket	●	
Fire extinguisher, dry powder		●
Travel alarm w/ rotating beacon		●

OTHER EQUIPMENT

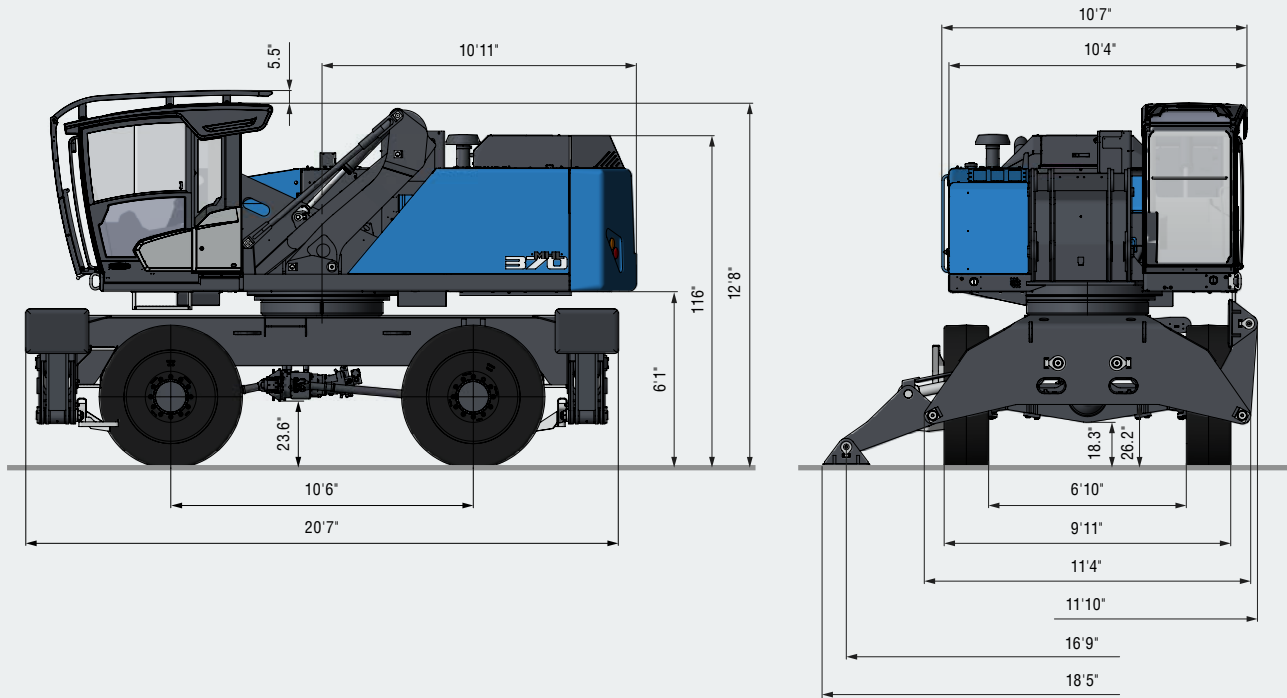
20 kW DC generator with controls		●
30 kW DC generator with "Hubboll" control		●
Close proximity range limiter for dipperstick	●	
Coolant and hydraulic oil level monitoring system	●	
Overload and working range monitoring		●
Filter system for attachments		●
Hose rupture valve for boom cylinder	●	
Hose rupture valve for stick cylinder	●	
Overload warning device		●
Quick coupling on dipperstick	●	
Dipperstick impact protection		●
Active cyclone prefilter (TOP AIR)		●
Hydraulic oil preheating		●
Lubrication of the grab suspension by central lubrication system	●	
LED front headlights	●	
Light packages LED		●
Float switch		●
Fuchs Telematics System, incl. 2 years service		●

Further optional equipment available on request!

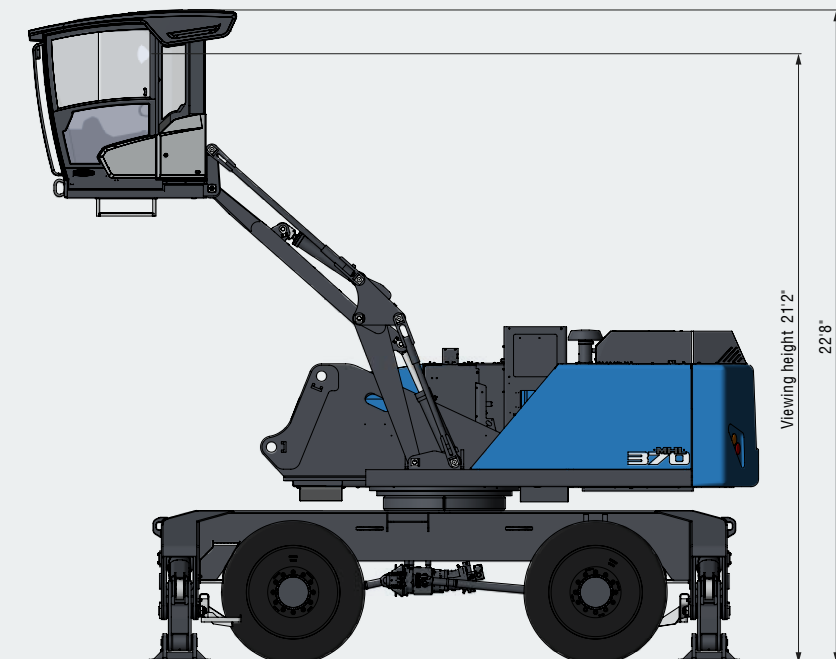
DIMENSIONS

WITH VERTICALLY ADJUSTABLE CAB

All dimensions in ft & in

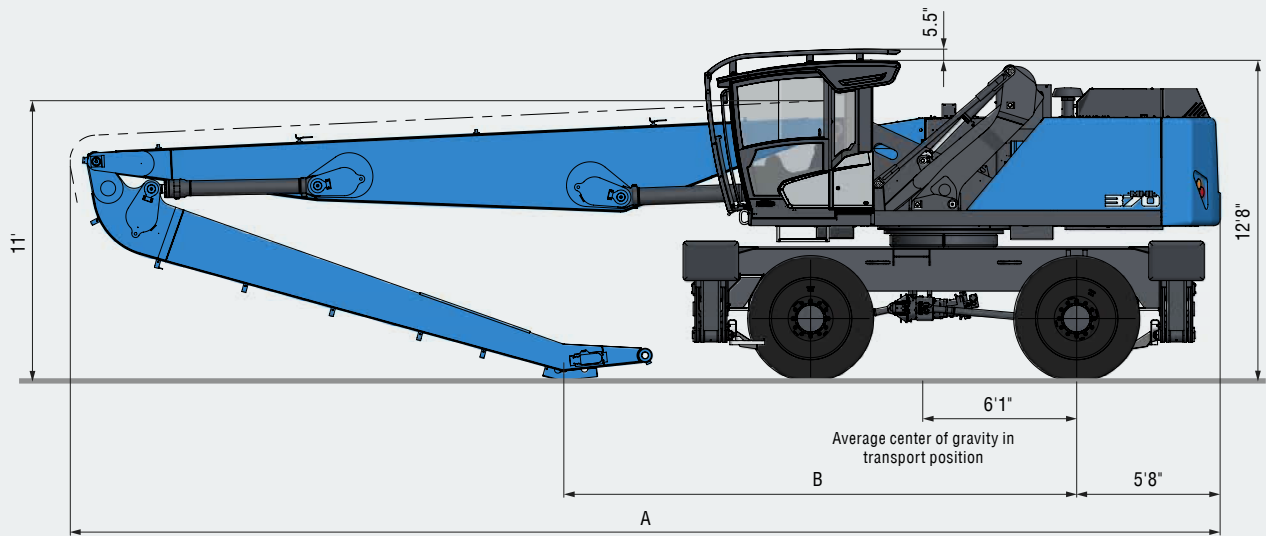


WITH VERTICALLY AND HORIZONTALLY ADJUSTABLE CAB



TRANSPORT DIMENSIONS

All dimensions in ft & in



Dimensions	Reach 54'2"	Reach 60'
A	45'5"	48'
B	20'3"	20'4"

LOADING EQUIPMENT CRANKED BOOM

All dimensions in ft & in

Reach 60'

