

WORKSITE PRO™

ATTACHMENTS



JOHN DEERE





Instant productivity. Just add attachments.

To get more productivity from your skid steer, compact track loader, compact wheel loader, or compact excavator, hook-up one of the many easy-to-use John Deere Worksite Pro™ attachments. The ever-expanding lineup includes more than 100 models, so you're sure to find the right tool for the job. What's more, each is backed by legendary John Deere parts, service, and warranty coverage. Add an attachment, and watch your productivity instantly increase.



Built-in versatility.

Worksite Pro attachments are optimized for use on our skid steers, compact track loaders, compact wheel loaders, and compact excavators. They're compatible with many comparable brands of machines, too.

Quik-Tatch™ makes any machine a taskmaster.

With the universal, self-cleaning Quik-Tatch easy-attachment system found on John Deere skid steers, compact track loaders, and compact wheel loaders, you can go from bucket to grapple to whatever in no time flat. Quik-Tatch attachments, Quik-Tatch productivity. That's the Worksite Pro lineup.

See pages 12–15 for the full list of available attachments.





Grow your productivity.

Worksite Pro attachments are designed to optimize performance and productivity. Their heavy-duty construction ensures maximum uptime and long life — whether you're hoisting hay bales, digging ditches, or rooting out rocks. What's more, Worksite Pro attachments are compatible among a number of machines throughout the John Deere CWP lineup, letting you increase utilization in a wide variety of tasks.

SS Skid Steer **CWL** Compact Wheel Loader **CEX** Compact Excavator **CTL** Compact Track Loader





1. Rotary Tillers

Rugged construction, heavy-duty tines, and a tilling depth to 152 mm (6 in.). Bidirectional operation increases productivity.

SS CTL

2. Material/Manure Scrapers

Push or scrape manure, mud, light snow, or other wet or sloppy materials. Rubber edges are ideal for cleanup on hard surfaces.

SS CTL

3. Side-Discharge Buckets

Spread sand, sawdust, or straw in livestock stalls; backfill gravel into trenches; or precisely place landscape mulch.

SS CTL

4. Rock Buckets

Ideal for sifting and sorting material, clearing stones, and removing debris. Buckets retain rock and debris while digging.

SS CTL

5. Rail/Heavy-Duty Pallet Forks

Mandatory tool for a wide variety of material-handling tasks. Choose 1067- or 1219-mm (42 or 48 in.) tine length.

SS CWL CTL

6. Square Bale Tines/Round Bale Spears

Square bale tines and round bale spears are retained with bolts, making them easier to replace. Helps eliminate weld fractures, too.

SS CWL CTL

← Ag Forks/Utility Grapples

Tines easily penetrate pen-packed material for quick clean-out. Grapple's 114- or 38-mm (4.5 or 1.5 in.) tine spacing and one-piece top clamp firmly grip hay and manure.

SS CTL



Easy to use, so you can get more done and undone.

Multi-machine compatibility. Intuitive controls. Numerous configurations. The John Deere Worksite Pro lineup offers it all. Hydraulic-driven tools such as trenchers and cold planers are available in both standard- and high-flow variations, giving you exactly what you need to get more work done — or undone. When it's productivity you want, it's a Worksite Pro attachment you need.

1. Mulching Heads

1524-mm (60 in.)-wide rotor and 36 double carbide-tipped teeth shred woody materials into beneficial mulch in just minutes.

SS CTL

2. Rotary Cutters

Double-edge blades, fast blade-tip speed, and tapered side-discharge chute ensure clean cutting and maximum material shredding.

SS CTL

3. Cold Planers

Ideal for street repairs, leveling uneven pavement, cutting drainage in parking lots, and cleaning around larger milling machines.

SS CWL CTL

4. Vibratory Rollers

Powerful compactor produces up to 4150 kg (9,370 lb.) of easy-to-control force. Choose the width and compaction force you need in padded or sheeps-foot configurations.

SS CWL CTL

5. Scrap Grapples

Two independent-action hydraulic-powered grapples pick up and grip different-sized objects. Ample grapple opening enables large payloads.

SS CWL CTL

6. Buckets

Numerous multipurpose, construction, dirt, foundry, utility, and tooth buckets are available in varying widths and capacities.

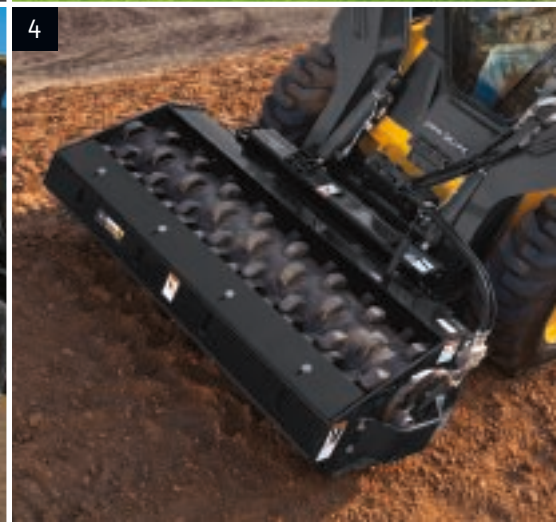
SS CWL CTL



Hydraulic Hammers

More blows per minute and 30-percent fewer parts than competitive or previous models help keep these hammers working where others won't.

SS CEX CTL



Go deeper.

Any attachment can help you do more. But only our Worksite Pro attachments are backed by more than 1,300 dealer locations, extensive parts inventories at 10 North American parts depots, and a one-year unlimited-hour warranty. When it comes to providing the uptime and response you need, we dig deeper.



1. Power Rakes

Perfect for seedbed or site prep. Exclusive forward and backward operation. Adjustable end plates provide box-scraper-like performance.

SS CTL

2. Augers

Planetary auger drives offer reverse rotation for quick back-outs, plus a variety of auger-bit styles and diameters.

SS CWL CEX CTL

3. Landplanes

Provide versatile, cost-efficient productivity for finish work. Front and rear cutting edges allow controlled grading and leveling in forward or reverse.

SS CTL

4. Backhoes

Four models connect quickly without tools and offer simple two-lever operation. Maximum digging depths range from 2388–3404 mm (94–134 in.).

SS CTL

5. Trenchers

Choose 914-, 1220-, and 1524-mm (36, 48, and 60 in.) digging depths; high- and low-flow versions. Heavy-duty drive system eliminates chain reduction.

SS CTL

6. Dozer Blades

Rugged blades come standard equipped with reversible cutting edges and skid shoes for long-term durability. Power angle and tilt let you make adjustments on-the-go.

SS CTL



7. Roller Levels

Provides unobstructed visibility and total control for contouring, grading, cutting, and smoothing flat or significantly sloped terrain. Use either front or rear cutting edge or both to spread loose materials or scrap hard-pack without cutting the base.

SS CTL

SS Skid Steer CWL Compact Wheel Loader

CEX Compact Excavator CTL Compact Track Loader

← Nursery Forks

Firmly grasp and effortlessly transport large rocks, light boulders, and balled and burlapped landscape stock up to 1118 mm (44 in.) in diameter.

SS CWL CTL



Make the most of your investment year-round.

Don't let the weather dampen your plans. Equipped with any of these Worksite Pro attachments, neither rain nor snow will keep you from the swift completion of your duties. What's more, these foul-weather friends will expand the year-round opportunities for your machines, helping make the most of your investment.



↑ Snow/Utility Blades and V-Blades

Blade angles hydraulically 30 deg. right or left. Trip springs protect vehicle from sudden impacts. Easy-to-adjust skid shoes and replaceable 12.7-mm (0.5 in.)-thick cutting edges are standard; rubber edges are available.

SS **CWL** **CTL**

1. Snow Pushers

Quickly and efficiently remove large accumulations of snow from sidewalks, parking lots, and driveways. Available pullback edge is ideal for work in confined areas and around obstructions.

SS **CWL** **CTL**

2. Snow Blowers

Two-stage hydraulic blowers throw snow up to 13.7 m (45 ft.). Simplified direct-drive hydraulic motor design eliminates chains and sprockets. Skid shoes adjust easily, and bolt-on wear-resistant tapered steel edges are simple to replace.

SS **CWL** **CTL**



3. Brooms

Angle and pickup styles available. Heavy-duty high-torque drive motors and 50/50 poly wire brush segments ensure long-term dependability.

SS CWL CTL

4. Steel Tracks

Self-cleaning design reduces ground pressure and helps improve traction and flotation in soft, muddy, or loose conditions. Smooths the ride on rough terrain, too.

SS



Worksite Pro Attachment Compatibility

	Skid Steers								Compact Track Loaders				Compact Excavators					Compact Wheel Loaders			
	312GR	314G	316GR	318G	320E	324E	328E	332E	317G	323E	329E	333E	17G	26G	35G	50G	60G	204K	244K*	304K	324K*
Ag Forks																					
AF66				•	•																
AF72				•	•	•	•		•	•											
AF78				•	•	•	•		•	•											
Augers (Planetary Drive)																					
PA15									•				•	•							
PA30				•	•	•	•	•	•	•	•	•			•	•	•	•	•	•	•
Backhoes																					
BH7				•	•				•	•											
BH8				•WT	•WT	•	•	•	•	•	•	•									
BH9				•WT	•WT	•	•	•	•	•	•	•									
BH11				•WT	•WT	•	•	•	•	•	•	•									
Backhoe/Excavator Buckets																					
9 in.													•								
12 in.													•	•	•	•	•				
13 in.																	•				
16 in.													•								
18 in.													•	•	•	•	•				
24 in.														•	•	•	•				
30 in.														•	•	•	•				
34 in.															•						
36 in.															•	•	•				
42 in.																	•				
Bale Spears																					
Round and Square				•	•	•	•	•	•	•	•	•						•	•	•	•
Brooms (Angle/Pickup)																					
BA72				•	•	•	•	•	•	•	•	•									
BA84				•	•	•	•	•	•	•	•	•									
BP72				•	•	•	•	•	•	•	•	•									
BP84				•	•	•	•	•	•	•	•	•									
BR72				•	•	•	•	•	•	•	•	•						•		•	
BR84				•	•	•	•	•	•	•	•	•						•	•	•	•
Buckets																					
Construction 66 in.				•	•																
Construction 72 in.				•	•	•	•		•	•											
Construction 76 in. (HD)					•	•	•	•	•	•	•	•									
Construction 78 in. (HD)				•	•	•	•	•	•	•	•	•						•	•	•	•
Construction 84 in. (HD)					•	•	•	•	•	•	•	•						•	•	•	•
Dirt 66 in.				•	•																



	Skid Steers								Compact Track Loaders				Compact Excavators					Compact Wheel Loaders				
	312GR	314G	316GR	318G	320E	324E	328E	332E	317G	323E	329E	333E	17G	26G	35G	50G	60G	204K	244K*	304K	324K*	
Buckets (continued)																						
Foundry 66 in.				•	•																	
Foundry 72 in.				•	•	•	•		•	•												
Foundry 78 in. (HD)				•	•	•	•	•	•	•	•	•										
Multipurpose 66 in.				•	•																	
Multipurpose 72 in.				•	•	•	•		•	•												
Multipurpose 78 in.				•	•	•	•	•	•	•	•	•										
Multipurpose 84 in.						•	•	•		•	•	•										
Rock R66				•	•																	
Rock R75				•	•	•	•	•	•	•	•	•										
Rock R84				•	•	•	•	•	•	•	•	•										
Tooth 66 in.				•	•																	
Tooth 72 in.				•	•	•	•		•	•												
Tooth 76 in. (HD)					•	•	•	•	•	•	•	•										
Tooth 78 in. (HD)				•	•	•	•	•	•	•	•	•						•	•	•	•	
Tooth 84 in. (HD)					•	•	•	•	•	•	•	•						•	•	•	•	
Utility 66 in.				•	•																	
Utility 72 in.				•	•	•	•		•	•												
Utility 78 in. (HD)				•	•	•	•	•	•	•	•	•						•	•	•	•	
Utility 84 in. (HD)				•	•	•	•	•	•	•	•	•						•	•	•	•	
Cold Planers																						
CP12D					•	•	•		•	•	•											
CP18D					•	•	•	•		•	•	•							•			•
CP24D						•	•	•			•	•							•			•
CP30D						•	•	•			•	•										
Dozer Blades																						
DB84				•	•	•			•	•												
DB96							•	•			•	•										
Grapples																						
Brush Tined GT72				•	•	•	•		•	•								•	•	•	•	
Brush Tined GT80					•	•	•	•	•	•	•	•						•	•	•	•	
Scrap GS66				•	•																	
Scrap GS72				•	•	•	•	•	•	•												
Scrap GS78					•	•	•	•	•	•								•	•	•	•	
Scrap GS84						•	•	•	•	•	•	•						•	•	•	•	
Utility Ag GU66				•	•																	
Utility Ag GU72				•	•	•	•		•	•												
Utility Ag GU78				•	•	•	•		•	•												

Worksite Pro Attachment Compatibility (continued from pages 12–13)

	Skid Steers								Compact Track Loaders				Compact Excavators					Compact Wheel Loaders			
	312GR	314G	316GR	318G	320E	324E	328E	332E	317G	323E	329E	333E	17G	26G	35G	50G	60G	204K	244K*	304K	324K*
Hydraulic Hammers																					
HH20C														•	•	•					
HH40C	•	•	•	•	•				•	•				•	•						
HH60C				•	•	•	•	•		•	•	•			•	•	•				
HH80C					•	•	•	•		•	•	•				•	•				
Landplanes																					
LP72				•	•	•			•	•											
LP78					•	•	•	•	•	•	•	•									
LP84						•	•	•	•	•	•	•									
Material/Manure Scrapers																					
MS72				•	•				•												
MS84				•	•	•	•	•	•	•	•	•									
MS96				•	•	•	•	•	•	•	•	•									
Mulching Heads																					
MH60						•HF	•HF	•HF					•HF	•HF							
MH60C						•HF	•HF	•HF					•HF	•HF							
Nursery Forks																					
NF44	•	•	•	•	•	•	•	•	•	•	•	•						•	•	•	•
Pallet Forks																					
Rail	•	•	•	•		•	•	•	•	•	•	•									
Heavy Duty						•	•	•	•	•	•	•						•	•	•	•
Power Rakes																					
PR72B				•	•	•	•	•	•	•											
PR84B				•	•	•	•	•	•	•	•	•									
PR96B					•	•	•	•	•	•	•	•									
Roller Levels																					
RL66				•	•	•			•	•											
RL84						•	•	•	•	•	•	•									
Rotary Cutters																					
RC60B				•	•				•	•											
RC72B				•	•	•	•	•	•	•	•	•									
RC78B						•	•	•					•	•							
RS72							•	•					•	•							
Rotary Tillers																					
RT52				•	•	•	•	•	•	•	•	•									
RT66				•	•	•	•	•	•	•	•	•									



	Skid Steers								Compact Track Loaders				Compact Excavators					Compact Wheel Loaders			
	312GR	314G	316GR	318G	320E	324E	328E	332E	317G	323E	329E	333E	17G	26G	35G	50G	60G	204K	244K*	304K	324K*
Side-Discharge Buckets																					
SA60				•	•				•	•											
SA72						•	•	•			•	•									
SD72				•	•	•	•		•	•											
SD84					•	•	•	•	•	•	•	•									
Snow Blowers																					
SB72B				•	•				•	•								•		•	
SB72H				•HF	•HF					•HF											
SB78B					•	•	•	•		•	•	•							•HF		•HF
SB78H				•HF	•HF	•HF	•HF			•HF	•HF	•HF							•HF		•HF
SB84B						•	•	•		•	•	•							•HF		
SB84H						•HF	•HF	•HF			•HF	•HF									•HF
Snow Pushers																					
SP8				•	•	•	•	•	•	•	•	•						•	•	•	•
SP10						•	•	•			•	•						•	•	•	•
Snow/Utility Blades																					
BL7B				•	•	•	•	•	•	•	•	•									
BL8B				•	•	•	•	•	•	•	•	•									
BL9B				•	•	•	•	•	•	•	•	•						•	•	•	•
BL10B						•	•	•	•	•	•	•						•	•	•	•
Snow/Utility V-Blades																					
BV7				•	•	•	•	•	•	•	•	•						•	•	•	•
BV9				•	•	•	•	•	•	•	•	•						•	•	•	•
Steel Tracks																					
10 in.				•	•																
12 in.					•	•	•														
14 in.						•	•	•													
Three-Point Hitch																					
				•	•	•	•	•	•	•	•	•									
Trenchers																					
TR36B				•	•	•	•	•	•	•	•	•									
TR48B				•	•	•	•	•	•	•	•	•									
TR60B				•HF	•HF	•HF	•HF	•HF		•HF	•HF	•HF									
Vibratory Rollers																					
VR66C				•WT	•WT	•	•	•	•	•	•	•									
VR66C Sheeps-foot				•WT	•WT	•	•	•	•	•	•	•									
VR73C						•	•	•	•	•	•	•									
VR73C Sheeps-foot						•	•	•	•	•	•	•									
VR84C						•	•	•	•	•	•	•							•		•

HD=Heavy Duty WT=Requires Additional Weights HF=Requires High Flow

*Requires the skid-steer interface in order to operate.



Get attached quickly with John Deere Finance.

With John Deere Worksite Pro attachments, you've got plenty of choices. And we can hook you up with the right financing, too. From flexible rates to flexible payments, our solutions are as varied as the products they support. Contact your John Deere dealer today and find out just how easy it is to get attached to the tools you need.



This literature has been compiled for worldwide circulation. While general information, pictures, and descriptions are provided, some illustrations and text may include finance, credit, insurance, product options, and accessories NOT AVAILABLE in all regions. PLEASE CONTACT YOUR LOCAL DEALER FOR DETAILS. John Deere reserves the right to change specifications, design, and price of products described in this literature without notice.

JohnDeere.com